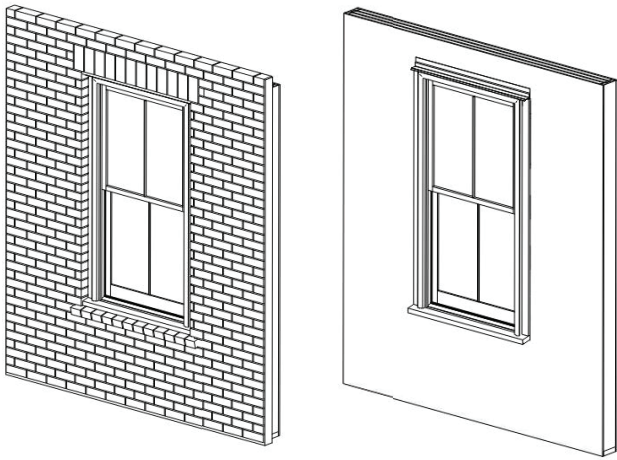


# Product Information

## Single or Double-Hung Window:



### Standard Product Information:

**Any deviation from this is possible, but these are Hull Millwork's standards for the 100 Year Window**

- Wood Species: Sapele
- Hardware: Cast Brass lifts, latches and pulleys from SRS Hardware
- Weight System: Steel bar weights with cotton sash cord
- Putty Glazing: Sarco Dual Glaze with acrylic latex or silicone 1 bedding (depending on finish)
- Glass: 1/8" double strength glass or Pilkington's Spacia Vacuum Insulated Glass

### Testing Results:

TEST TYPE	TEST METHOD	MEASURED	ALLOWED
Operating Force A440-17	A440-17- LS-Breakaway	160.1N (36.0 lbs.)	230N (51.71 lbs.)
	Open	29.35N (6.6 lbs)	180N (40.47 lbs.)
	Close	30.2N (6.8 lbs.)	180N (40.47 lbs.)
	A440-17- US-Breakaway	169.1N (38.0 lbs.)	230N (51.71 lbs.)
	Open	32.03N (7.2 lbs)	180N (40.47 lbs.)
	Close	30.7N (6.9 lbs.)	180N (40.47 lbs.) 180N (40.47 lbs.)
Force to Latch		8.9N (2.8 lbs.)	100N (22.48 lbs.)
Air Infiltration	ASTM E 283	300 Pa (6.24Psf) 1.10 L/s m <sup>2</sup> (0.22 cfm/ft <sup>2</sup> )	1.5 L/s*m <sup>2</sup> (0.30 cfm/ft <sup>2</sup> )
Water Resistance	ASTM E 547- 220 Pa(4.59 Psf)	No Leakage	No Leakage
Deflections	ASTM E 330 - Span	No Damage	No Damage
	Positive 1440 Pa (30.08 Psf) at meeting stile	9.70mm (0.382')	Reported
	Negative 1440 Pa (30.08 Psf) at meeting stile	10.69mm (0.421')	Reported
Structural	ASTM E 330 Span L/500	No Damage	No Damage
	Positive 2160 Pa (45.11 Psf)	<0.25 mm <0.01"	2.74 mm (.108")
	Negative 2160 Pa(45.11 Psf)	<0.25 mm <0.01"	2.74 mm (.108")
Forced Entry	ASTM F 842 Grade 10	No Entry	No Entry
Deglazing	ASTM E 987		
	Vertical Stiles at 320 N (71.94 lbs.)	Passed	<95%
	Horizontal Stiles at 230 N (51.71 lbs.)	Passed	<95%

### Therm Testing Results:

TEST TYPE	U-FACTOR	R-VALUE
Single Pane Glass	0.709	1.411
Single Pane Glass with a Storm Window	0.517	1.935
Pilkington's Spacia Vacuum Insulated Glass	0.269	3.72